



■ PRECISION MACHINING

# TRANSMISSIONS INDUSTRIAL

Precision-machined components for kilns and dryers. Roller holders, bearings, split gears, supports and rollers.



SINCE 1986 · PRECISION MACHINING

PACE

■ OUR STORY



**WATCH THE VIDEO**  
SCAN THE CODE

# A family-owned precision machining company

Founded in 1986 by the Pulcinelli family in Mogi Mirim (São Paulo, Brazil), PACE specializes in precision machining for **roller kilns and dryers**. Today it is an international benchmark in components for this sector, manufactured under strict dimensional control and engineered to withstand the harshest environments.

It combines the reliability of family management with the precision of modern industrial production, delivering tailor-made solutions to customers worldwide.

<b>1986</b>	FOUNDED · FAMILY-OWNED
<b>66.000 m<sup>2</sup></b>	TOTAL AREA
<b>7.500 m<sup>2</sup></b>	PRODUCTION AREA
<b>ISO 9001:2015</b>	QUALITY SYSTEM

■ GLOBAL PRESENCE · WORLDWIDE EXPORT

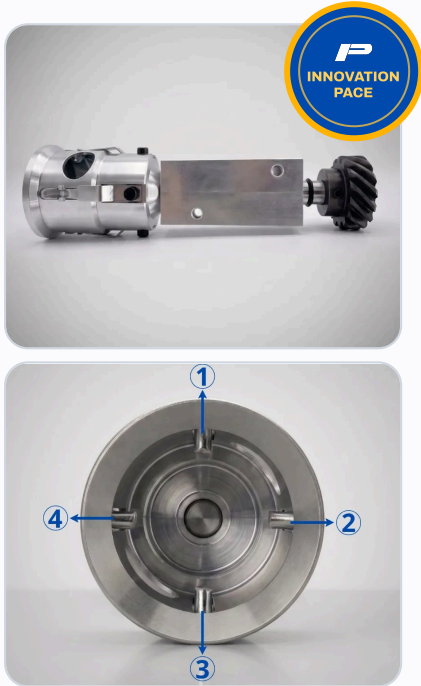
PACE GLOBAL NETWORK

- **Production**  
Brasil · Mogi Mirim (SP)
- **Europe distribution**  
Italy · local stock
- **Export**  
Customers worldwide

# 01 NEW SOLUTIONS

Engineering solutions developed by PACE to reduce line downtime and simplify kiln and dryer maintenance.

**Roller holder with 4 traction clips**



SEE P. 04

**Triple bearing support**



SEE P. 04

**Split Gears**



SEE P. 07

**Bearing with grease fitting**



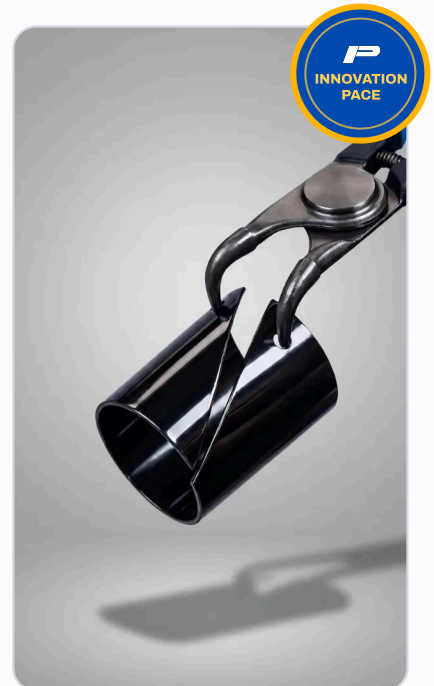
SEE P. 09

**Bearing with PACE C6 special clearance**



SEE P. 09

**Sheet metal guard**



SEE P. 10

02 / 08

# TRANSMISSION SYSTEMS KILNS

We manufacture the components that keep kilns running, with machining precision and materials selected to withstand high temperatures and wear. Standard parts or custom developments, according to each customer's requirements.



**WATCH THE VIDEO**  
SCAN THE CODE

## CATEGORY HIGHLIGHTS



### Triple bearing support

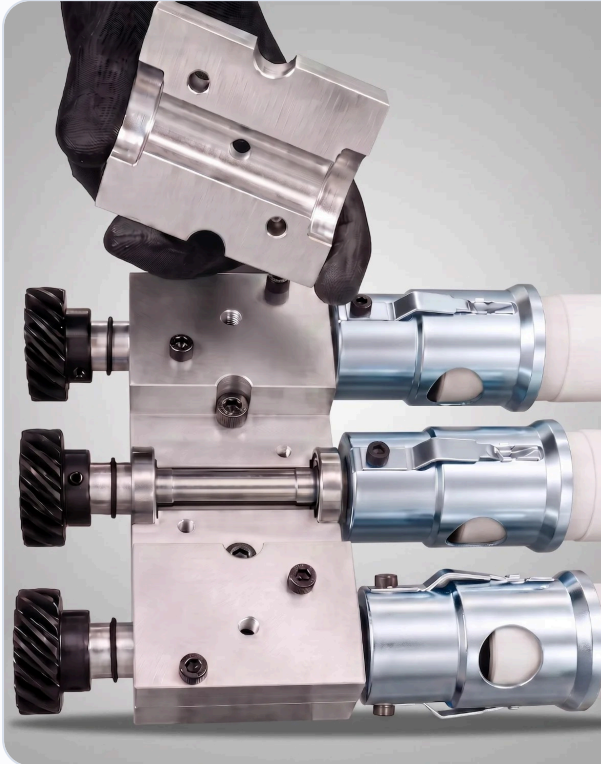
- Greater support at the leverage point, providing longer bearing and assembly life;
- Supports fitted with PACE 6002 / 6201 Z bearings, PACE C6 special clearance - anti-seize;
- Greater transmission stability, ensuring efficient operation.



### Roller holder with 4 traction clips

- Distributes traction force better, extending clip service life;
- Reduces wear and prevents breakage of the ceramic roller tip;
- Fewer idle rollers;
- Fewer maintenance interventions, greater productivity!

# Kiln components



## Split supports

NEW

- Easy assembly and disassembly;
- Less maintenance time and fewer machine stops;
- Precision-machined, ensuring the alignment and rigidity of the two halves;
- We offer complete or partial assembly.



## Transmission systems VARIOUS MODELS

- Supports fitted with PACE 6002 / 6201 Z bearings, PACE C6 special clearance - anti-seize;
- Machined from solid aluminum bar for greater rigidity and transmission precision;
- Excellent performance;
- We offer complete or partial assembly.





## Traction clips

VARIOUS MODELS

- Made of heat-treated spring steel;
- Good elasticity, preventing roller breakage;
- Excellent cost/benefit ratio;
- Available in different models.



# 03

 / 08

■ CATEGORY 03

## TRANSMISSION SYSTEMS DRYERS

We manufacture the transmission components that keep dryers running, with machining precision and materials resistant to wear and process dust. Standard parts or custom developments, according to each customer's requirements.



### ■ DESCRIPTION

- Supports fitted with PACE 6002 / 6201 Z bearings, PACE C6 special clearance – anti-seize;
- Machined from solid aluminum bar for greater rigidity and transmission precision;
- Excellent performance;
- We offer complete or partial assembly.

# 04 / 08

## SPLIT GEARS

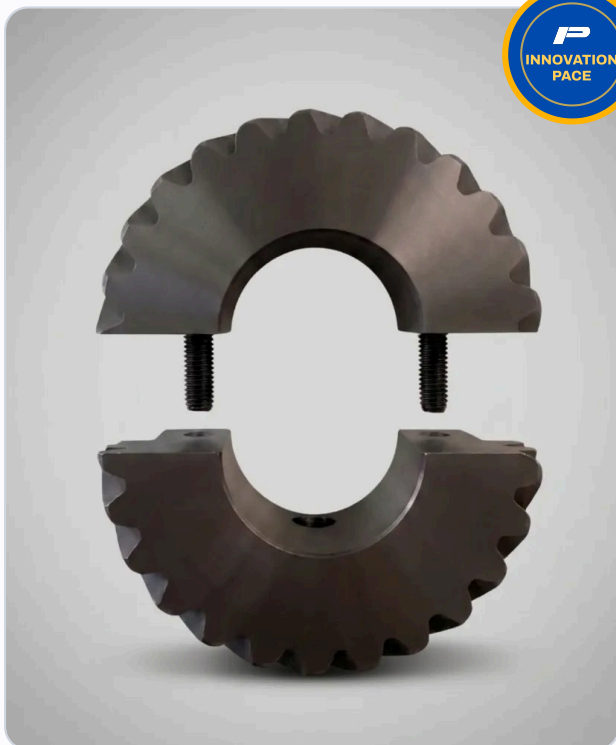
We design and manufacture gears for industrial transmissions. The split gear, a PACE development, simplifies assembly and extends equipment service life. Standard or custom parts, according to each customer's requirements.



 **WATCH THE VIDEO**  
SCAN THE CODE



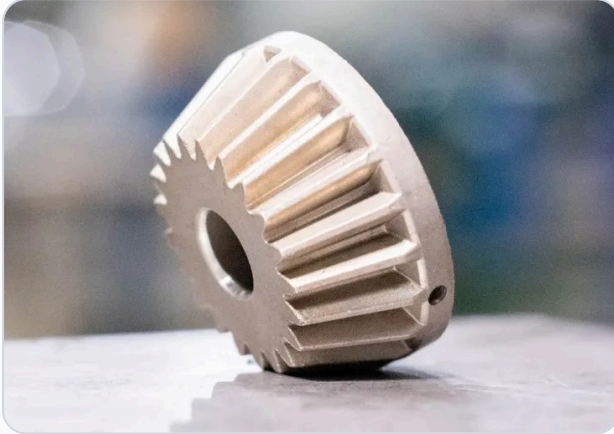
### Split Gears



#### ■ DESCRIPTION

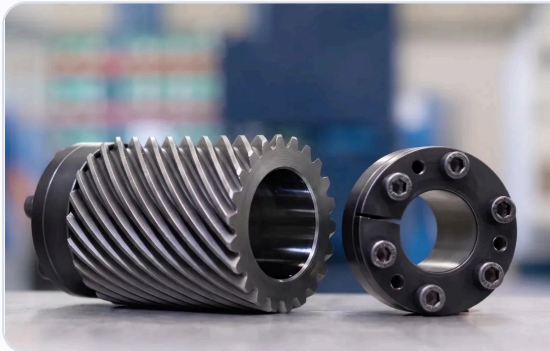
- No need to remove the shaft to replace the gear;
- Fewer machine stops, greater productivity;
- Parts made of hardened or sintered steel;
- Product under strict dimensional control;
- Low maintenance cost.

## Gears and pinions



### DESCRIPTION

- Parts made of hardened or sintered steel;
- Excellent transmission precision;
- Low maintenance cost.



### Gears with taper-lock bushing

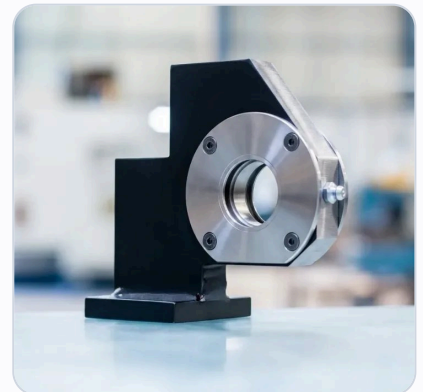
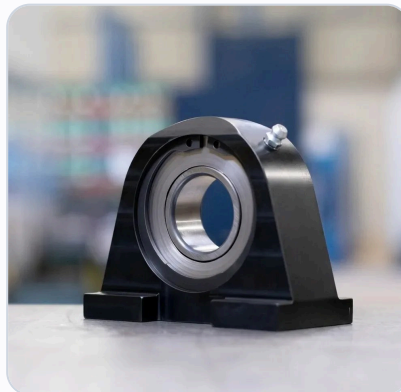
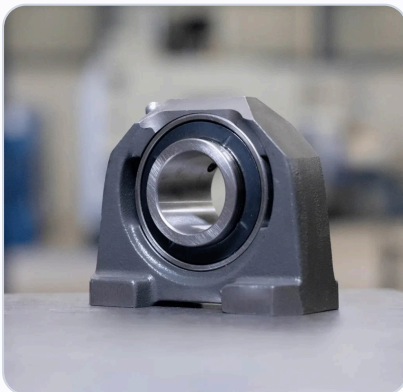
- Excellent clamping;
- Easy maintenance.

## 05 / 08

■ CATEGORY 05

## SUPPORTS

We manufacture and supply supports for industrial equipment in different configurations, including custom models for each customer's application.



### DESCRIPTION

Various support models; custom models also available.

# 06 / 08

## ROLLER SUPPORTS · BEARINGS

We manufacture roller supports and bearings for the most critical zones of kilns and dryers, steel-shielded and factory-lubricated to withstand high temperatures and dust.



**WATCH THE VIDEO**  
SCAN THE CODE

### HIGHLIGHTS · PACE DEVELOPMENT



#### Bearing with grease fitting

- Excellent performance in the most critical zones of kilns and dryers;
- Roller support with steel shield;
- Factory-lubricated with high-temperature grease.



#### Bearing PACE C6

- Developed with PACE C6 special clearance - anti-seize, for the ceramic industry;
- Extra clearance to withstand high temperatures and dust.



#### Bearings

- Suitable for aggressive environments with dust and high temperature;
- Factory-lubricated with high-temperature grease;
- Excellent cost/benefit ratio.



#### Leveling roller support

- Solution to the problem of leveling ceramic rollers at the junction between modules.

# 07 / 08

## SHEET METAL GUARD QUICK-CHANGE

Protection for the ceramic roller end, with a quick-change system that reduces maintenance time and offers extended service life.



**WATCH THE VIDEO**  
SCAN THE CODE



TWO TYPES OF GUARDS



### Sheet metal guard

- Easy installation;
- Made of heat-treated spring steel for long service life;
- Fewer maintenance interventions;
- Strategically positioned holes for faster, more efficient replacement.



### Spiral guard

- High-performance spiral guard;
- Made of heat-treated spring steel;
- Excellent cost/benefit ratio;
- Available in different models;
- Made of square or round wire, in various sizes.

# LOADING AND UNLOADING ROLLERS

We manufacture loading and unloading rollers with different coating types, adapted to each customer's material and process.



■ DESCRIPTION

Coatings selected according to the material conveyed and the application area.

■ QUALITY & PROCESSES

PACE GUARANTEE  
ON EVERY PART

## PRECISION GUARANTEED

PACE production follows a Quality Management System certified to **ISO 9001:2015** (BSI · certificate FM 778490). Each component is manufactured with dimensional control, heat treatment according to specification and full traceability of the raw material.

The result: reliable, repeatable parts ready for continuous service, with the trust of family management and the precision of modern industrial production.



■ PROCESSES & CONTROLS

### 01 CNC machining

CNC machining centers for repeatability and high precision.

### 02 Dimensional control

Verification of dimensions and tolerances at every stage.

### 03 Heat treatment

Hardness and strength according to part specification.

### 04 Material traceability

Origin records and raw material certificates.

### 05 Hardness testing

Verification of the component's surface hardness.

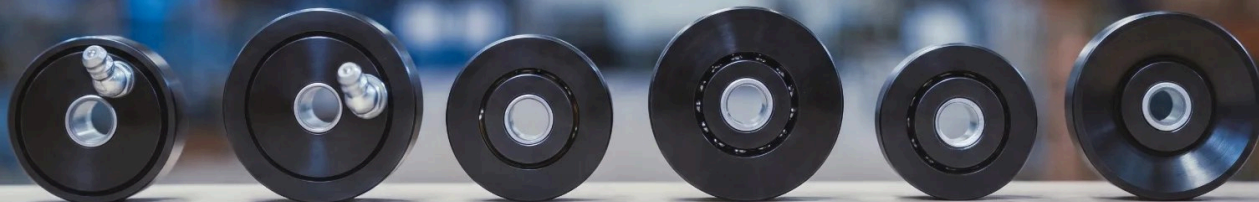
### 06 Verified assembly

Assemblies mounted and checked before shipment.

QUALITY GUARANTEE

**Every part, traceable and verified before shipment.**

ISO 9001:2015



■ CONTACT US

# LET'S TALK SOLUTIONS

Count on PACE for your kiln or dryer. From spare parts to innovation, we develop the solution together with you.

 BRAZIL

 +55 19 99842 0464

 [pace@pace.com.br](mailto:pace@pace.com.br)

 [www.pace.com.br](http://www.pace.com.br)

 Rodovia Eng. João Tosello, km 68 · Mogi Mirim (SP)  
· 13814-000 · Brasil (Factory)




 **WhatsApp**  
TALK TO US

 ITALY

 +39 345 8384315

 [pace@paceindustria.it](mailto:pace@paceindustria.it)

 [www.paceindustria.it](http://www.paceindustria.it)

 Via Ferrari, 27, Int. 42 · 41043 Formigine (MO) ·  
Italy (Warehouse)



 **WhatsApp**  
TALK TO US

■ REGISTERED OFFICES

### PACE Indústria Mecânica LTDA

Rodovia Engenheiro João Tosello, km 68  
Sobradinho · 13814-000 · Mogi Mirim  
São Paulo · Brasil  
CNPJ: 56.541.436/0001-42

### PACE Italia Industria e Commercio SRL

Via Rossena, 4 · 42123 Reggio Emilia (RE) · Italia  
Codice Fiscale / Partita IVA: 03027740350  
Capitale Sociale: 10.000 I.V. Euro  
Registro Imprese di Reggio Emilia · REA RE-351384  
Codice EORI: IT03027740350